

CN51 CN50

Accessory Guide

Docks and Modules

Accessory Name	Part Number	Description
 <p>4-Bay Multi-Dock, Ethernet</p>	871-032-101	<p>Charge and transfer data for up to 4 devices with Ethernet interface.</p> <p>Requires AC adapter (851-082-205 everywhere except EMEA; 851-095-131 is required for use in EMEA) and country specific power cord.</p>
 <p>4-Bay Multi-Dock, Charge Only</p>	871-032-002	<p>Charge up to 4 devices.</p> <p>Requires AC adapter (851-082-205 everywhere except EMEA; 851-095-131 is required for use in EMEA) and country specific power cord.</p>
 <p>Single Dock</p>	871-033-011	<p>USB Host and Client Support with bay for charging a spare battery pack. (8.9"L x 4.5"W x 2"T) Requires AC adapter (851-061-502) and country-specific power cord. Optional: Single Dock Ethernet Module (871-025-101).</p>
 <p>Single Dock Ethernet Module</p>	871-238-001	<p>Ethernet Module interfaces with USB Host connector on Single Dock, (871-033-001). (1.5"L x 2.5"W x 1"T).</p>
 <p>Vehicle Holder</p>	805-664-001	<p>Non-Powered vehicle holder for hands-free communications.</p> <p>Holder can be used with or without vehicle power adapter.</p> <p>Requires mount (805-611-001).</p>
 <p>Vehicle Dock Mounting Kit</p>	805-611-001	<p>Allows for mounting of Vehicle Holder (805-664-001) in route vehicle applications. Consists of one 4 3/4" adjustable pivot arm with two 1 1/2" stainless steel balls and assembly hardware. Due to wide range of possible applications, this kit doesn't include hardware for securing mount to vehicle.</p> <p>Requires holder (805-664-001).</p>
 <p>Snap-on Adapter, MSR, CN50 Series</p>	850-573-001	<p>Attaches to the heel of CN50 Series devices and provides magnetic stripe reader.</p>
 <p>Snap-on Adapter, RS232/DEX, CN50 Series</p>	850-578-001	<p>Attaches to the heel of CN50 Series devices and provides RS232 communications via DB9M connector.</p> <p>Must order cables, including DEX cable 236-194-001, separately.</p>

CN51 CN50

Accessory Guide

Docks and Modules (cont'd)

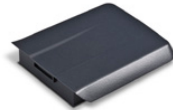
Accessory Name	Part Number	Description
Snap-on Adapter, USB, CN50 Series	850-581-001	Attaches to the heel of CN50 Series devices and provides USB Host and Client communications via HDB15M connector. Requires USB cable VE011-2018 (Client) and/or VE011-2016 (Host). Must order cables separately.

Desktop Adapter, USB, CN50 Series	852-073-001	Desktop adapter with Micro-AB USB port provides USB Host and Client connectivity for CN50 and CN51, and charging (via USB) for CN51. Must order cables and power adapters separately.
-----------------------------------	-------------	--

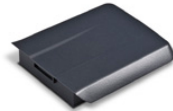


Batteries and Chargers

Accessory Name	Part Number	Description
Battery Pack, CN50	318-039-001	Spare or replacement battery pack for CN50 (one pack included with each mobile computer), 3900 mAh, 3.7 V Li-Ion Prismatic Cell. Provides 14.4 watt hours.



Battery Pack, CN51	318-052-001	Spare or replacement battery pack for CN51 (one pack included with each mobile computer), 3920 mAh, 3.7 V, Li-Ion Prismatic Cell. Provides 14.5 watt hours.
--------------------	-------------	---



Quad Battery Charger	852-068-001	Simultaneously charge up to 4 batteries. Requires AC adapter (851-061-502) and country specific power cord.
----------------------	-------------	---



AC Adapter for Multi-Dock	851-082-205; 851-095-131 is required for use in EMEA	AC adapter for multi-docks (871-032-101) and (871-032-002). Not for Quad Battery Charger (852-068-001) Requires country specific power cord (page 3).
---------------------------	---	---



AC Adapter for Quad Battery Charger and Single Dock	851-061-502	AC adapter for quad charger (852-068-001) and single dock (871-033-001). Not to be used for the "Ethernet" multi-dock (871-032-101) and the "charge only" multi-dock (871-032-002) Requires country specific power cord (page 3).
---	-------------	---



CN51 CN50

Accessory Guide



Batteries and Chargers (cont'd)

Accessory Name	Part Number	Description
	851-093-201	<p>Desktop AC power and communication adapter with USB port, enabling desktop charging and data transfer.</p> <p>Requires country specific power cord (page 3).</p>
	852-070-011	<p>Vehicle 12V-24V adapter for charging on the go.</p> <p>Can be used as a heel clip on CN50 Series devices or it can be permanently mounted to the bottom of the vehicle holder.</p>

Power Cords

Accessory Name	Part Number	Description
AC Power Cord	321-470-001 321-500-001 071918 1-974027-025 1-974028-025 1-974029-020 1-974030-025 321-471-002 321-501-002 321-502-002	AC Power Cord, Switzerland AC Power Cord, Japan AC Power Cord, China RoHS AC Power Cord, Europe RoHS AC Power Cord, US RoHS AC Power Cord, UK RoHS AC Power Cord, Australia RoHS AC Power Cord, Italy RoHS AC Power Cord, Denmark RoHS AC Power Cord, India/S Africa RoHS


Data Cables

Accessory Name	Part Number	Description
	236-209-001	<p>USB-A to USB Micro-B Plug (2 meters)</p> <p>Connects the desktop adapter (851-093-001) to PC USB port enabling quick data transfer.</p>
	Product Links	<p>Micro USB (Male) to Standard USB (Female)</p> <p>For connecting an accessory such as a memory stick.</p> <p>See Digi-key # H11576-ND</p>

CN51 CN50

Accessory Guide

Data Cables (cont'd)

Accessory Name	Part Number	Description
DB9 to DEX Cable	236-194-001	For use with RS232/DEX Adapter (850-578-001). Includes thumb screws for secure attachment.
		
Cable, Single USB Host	VE011-2016	For use with USB Snap-on Adapter (850-581-001) to USB-A Female receptacle for connectivity to USB Host peripherals. Includes thumb screws for secure attachment.
Cable, Single USB Client	VE011-2018	For use with USB Snap-on Adapter (850-581-001) to provide USB Client (ActiveSync) connection to host PC. Includes thumb screws for secure attachment.

Handles and Holsters

Accessory Name	Part Number	Description
Scan Handle, CN51	805-679-001	Snaps easily on or off CN51. Ergonomic handle which angles mobile computer to enable viewing while scanning. Not compatible with CN50, Vehicle Docks or Vehicle Holder.
		
Belt Holster, CN50 Series	815-066-001	Belt holster for CN50 Series devices without Scan Handle.
		
Holster, CN50 Series	815-089-001	Holster, CN50 Series devices without Scan Handle
		
Holster, CN51 w/Scan Handle	815-090-001	Holster, CN51 with Scan Handle
		






CN51 CN50

Accessory Guide

Replacement Parts

Accessory Name	Part Number	Description
Kit - Handstrap, CN50	203-899-001	Handstrap replacement for CN50 (5 Pack)
Kit - Handstrap, CN51	213-008-001	Handstrap replacement for CN51 (5 Pack)
Kit - Handstrap, Stretch-Limiter, CN51	213-024-001	Handstrap replacement for CN51 (5 Pack)
Kit - Stylus Tethered, CN50	203-900-001	Stylus tethered replacement for CN50 (5 pack)
Kit - Stylus Tethered, CN51	213-025-001	Stylus tethered replacement for CN51 (5 Pack)
Kit - Screen Protector, CN50	346-069-104	Clear plastic LCD overlays for CN50. Same as CK3. (10 Pack)
Kit - Screen Protector, CN51	346-085-001	Clear plastic LCD overlays for CN51 (10 Pack)

FlexDock Supplies

Accessory Name	Part Number	Description
 Quad Dock-Ethernet	DX4A155510	Accommodates four mobile computers. Includes power supply, North American Power Cord. Features 100Base-T Ethernet connectivity; provides 2 - RJ45 jacks for upstream connections and downstream "daisy-chain" connections of up to 10 docks.
 Quad Dock-Ethernet	DX4A155500	Accommodates four mobile computers. Includes power supply. Order power cord separately. Features 100Base-T Ethernet connectivity; provides 2 - RJ45 jacks for upstream connections and downstream "daisy-chain" connections of up to 10 docks. Country specific power cords must be ordered separately.
 Quad Dock-Charge Only	DX4A255510	Accommodates four mobile computers - CHARGE ONLY. Includes power supply and North American Power Cord.
 Quad Dock-Charge Only	DX4A255500	Accommodates four mobile computers - CHARGE ONLY. Includes power supply. Country specific power cords must be ordered separately.
 Mobile Computer Cup, CN50 Series	203-918-001	Supports (1) mobile computer when snapped into a bay of base unit.